

# C6100 Series Digital Color Printers

**OKI**<sup>®</sup>  
PRINTING SOLUTIONS



**High-definition color.  
Exceptional workgroup performance.**

C6100n  
C6100dn  
C6100dtn  
C6100hdn





## Ideal for businesses that need the power and control of a high-end workgroup color printer in a compact package.

### Highlights:

- **Fastest in their class: color output at up to 26 ppm; black & white at up to 32 ppm<sup>1</sup>**
- **Time to first page as fast as 11 seconds color, 9 seconds black & white<sup>1</sup>**
- **HD Color Printing technology for sharp detail and rich color depth**
- **1200 x 600 dpi resolution for crisp, clear output**
- **Models available with duplex (2-sided) printing, additional paper capacity, and 40 GB hard disk drive standard**
- **PCL and PostScript compatibility**
- **10/100 Base-T Network connectivity standard**
- **Single Pass Color™ Digital technology for printing up to 110 lb. (203 gsm) card stock and banners**
- **Handles media from 3" x 5" cards to banner sheets up to 8.5" x 47.24"**
- **Security features including data encryption, password protection, and document and hard disk erasure**
- **Convenient operator panel enables printer and network settings changes**
- **High-capacity, 2-piece consumables for low Total Cost of Ownership in color and mono<sup>2</sup>**
- **1-Year limited warranty with Overnight Exchange on printer<sup>3</sup>; 5-Year limited warranty on LED printheads**
- **Live, toll-free technical support 24/7/365<sup>3</sup>**

### High-definition color. Exceptional workgroup performance.

**Your workgroups are looking for spectacular documents; you want a great return on your printer investment. No problem.** C6100 Series Digital Color printers from OKI Printing Solutions are the answer. They combine fast, high-quality color output with standard features such as automatic duplex (2-sided) printing (C6100dn, -dtn and -hdn<sup>4</sup>), extra paper capacity (C6100dtn<sup>4</sup>), a 40 GB hard disk drive (C6100hdn<sup>4</sup>), plus our legendary reliability.

**HD Color Printing technology** – All C6100 Series printers utilize this unique process for breathtaking output, even on ordinary office copy paper.

Building on the OKI Printing Solutions heritage of color printing innovation, HD Color Printing technology combines multilevel LED printheads and microfine toner to render deeper, more saturated colors, finer detail, and more precise toner placement than ever before.

**Rich color pages at up to 26 per minute<sup>1</sup>** – The C6100 Series delivers crisp 1200 x 600 dpi color output, with the first page printing in as little as 11 seconds.<sup>1</sup> Black & white pages print at up to 32 ppm, the first in as little as 9 seconds.<sup>1</sup> The C6100 Series supports both PCL<sup>®</sup> and PostScript<sup>®</sup> emulations.

**Exceptional paper handling** – All C6100 Series models have a paper capacity of at least 400 sheets: a 300-sheet paper tray plus built-in 100 sheet multi-purpose tray for labels,

envelopes, transparencies, and card stock up to 110 lb. Use it to print everything from 3" x 5" cards to banner-size sheets up to 8.5" wide by four feet in length.

Since the more sheets a printer holds means fewer user interventions, the C6100 Series can further increase your productivity: the standard paper capacity of the C6100dtn is 930 sheets with a 530-sheet 2nd tray. The 2nd tray is optional on the other models.

**Workgroup connectivity built in** – Share the advantages and efficiencies of any or all of the C6100 Series models through their internal OkiLAN<sup>®</sup> 10/100 Base-T print server. Or make them personal printers by connecting through their high-speed USB 2.0 port.

**Unmatched warranty support** – We're so confident in the reliable performance of the C6100 Series that we provide an industry-leading 5-year warranty on all printheads, and a 1-year limited printer warranty with Overnight Exchange and optional coverage extensions.<sup>3</sup> Of course, if you need technical assistance, you can speak to a live expert located in North America—24/7/365—by calling 800.OKI.DATA (800.654.3282).<sup>3</sup>

<sup>1</sup> Published performance results based on laboratory testing. Individual results may vary.

<sup>2</sup> Printers ship with complete set of 2,000-page "starter" toner cartridges. 5,000-page Color and 6,000-page Black toner cartridges are available.

<sup>3</sup> Available in the U.S. and Canada only.

<sup>4</sup> Optional on other models.

# The C6100 Series: your best choice for accurate color output, a high level of security, and a better bottom line.

**Digital Color printers from OKI Printing Solutions deliver more than brilliant output at best-in-class speeds.** The C6100 Series also gives you control—over the quality of your output, the degree of your security, and the extent of your printing costs.

C6100 Series models offer a long list of features that can improve your image, peace of mind and profitability. Here are some value-added examples:

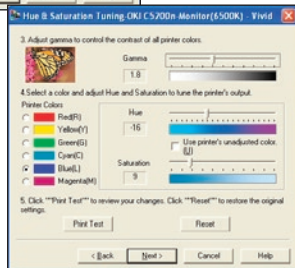
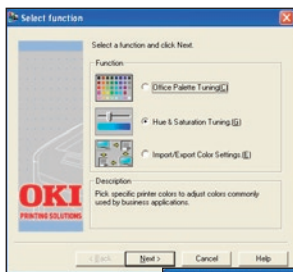
## Color Swatch

Easily match custom colors to the color values on your C6100 Series printer. Select a simple swatch to print a basic set of colors then match the values in your application. Select a custom swatch and set the Hue, Saturation and Lightness to target your custom color.



## Color Correct

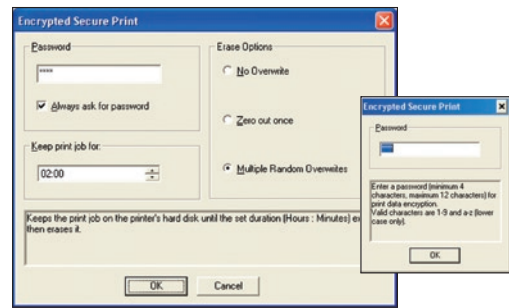
Makes it easy to adjust colors commonly found in applications such as Microsoft® Word, Excel and PowerPoint®. It also lets you adjust the overall color of a print by controlling the lightness, darkness and contrast of images, and the intensity and lightness of the colors.



C6100 Series models equipped with a 40 GB hard disk drive (standard on the C6100hdn; optional on the others) provide enhanced security features that include:

## Encrypted Secure Print

- **256-Bit Encryption**  
Enables secure passage of sensitive documents from PC to printer, with processing and output requiring PIN identification.



- **Job Timeout**

If not retrieved within a certain time (pre-set by the user), the document is sanitized (cleared) from the hard disk.

- **MAC Validation**

The Message Authentication Code (MAC) is PC-encrypted into a document's printing data to prevent the file from being tampered with after it is sent to the printer. The printer reads the code and, if any alterations to the file are detected, issues a warning and cancels the job.

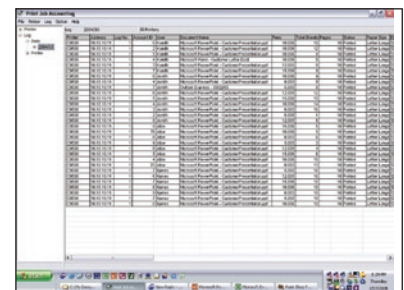
- **Secure Erase**

Ordinarily, simply deleting a document leaves traces of the contents on a printer's hard drive. This feature totally removes the document from the hard disk drive, erasing all vestiges of a sensitive file or, if desired, sanitizing the entire disk drive.

- **Job Accounting**

Enables tracking of color and mono printing costs, easy monitoring of printing activity, and greater control of printer usage. It generates reports for administrative, bill-back or cost-accounting purposes. User permissions can be assigned and are stored on the printer—not on the network—so the system is totally secure.

**If you're looking for high speed, high quality, and a high level of control in printers that will perform to your unique demands, the C6100 Series from OKI Printing Solutions has exactly what you want.**



C6100dn shown with standard 530-sheet 2nd paper tray

# C6100 Series Digital Color Printers

## Specifications

### Performance

- **Print Speed:** Up to 26 ppm Color; up to 32 ppm Mono<sup>1</sup>
- **Time to First Page:** As fast as 11 sec. Color; 9 sec. Mono<sup>1</sup>
- **Processor:** 500 MHz PowerPC CPU
- **HD Color Technology:** Combines multilevel LED printing and microfine toner for sharp detail and rich color depth
- **Print Resolution:** 1200 x 600 dpi
- **Duty Cycle:** Up to 60,000 pg./mo.
- **Duplex (2-Sided) Printing:** Standard on C6100dn, C6100dtn and C6100hdn; optional on C6100n

### Productivity Solutions

- **Web-based Printer Management:** PrintSuperVision and OKiLAN® Embedded Web Server

### Security Solutions

- **Encrypted Secure Printing (requires Hard Disk Drive<sup>2</sup>):** PIN/password-enabled; 256-bit encryption (PKCS #5, v2.0); Secure Erase (DOD5220.22-M compliant); Message Authentication Code (MAC); IP filtering, MAC address filtering, SNMP v3, Protocol lockouts

### Cost Containment Solutions

- **Job Accounting Software:** Tracks precise count of color/mono pages by individual or department; allows control over color printing access, and converts unauthorized color print jobs to black & white (Hard Disk Drive required for optimal functionality<sup>2</sup>)

### Compatibility

- **Emulations:** PCL® 5e, PCL 6 and PostScript® 3™
- **Operating Systems:** Standalone and network – Windows® XP, Me, 2000, 98, NT® 4.0 – 6.0; Mac® support – Classic v9.1 and higher, OS X v10.1 and higher

### Connectivity

- **Network Interface:** OKiLAN® 10/100 Base-T Internal Ethernet Print Server
- **Local Ports:** USB v2.0

### Memory

- **Standard:** 256 MB
- **Maximum:** 768 MB
- **Memory Storage:** 40 GB Hard Disk Drive standard on C6100hdn; optional on other models

### Resident Typefaces

- **Scalable:** 85 PCL fonts and 136 PostScript fonts; PCL Bitmap fonts – OCR-A/B; USPS ZIP Barcode

### Paper Handling

- **Paper Input:** 400 sheets standard with 300-sheet Legal/Letter/Universal Tray and 100-sheet Multi-Purpose Tray; 930 sheets max. with 530-sheet 2nd Paper Tray (standard on C6100dtn; optional on other models)
- **Multi-Purpose Tray:** Standard 100-sheet; handles overhead transparencies, envelopes, mailing label stock, and banners
- **Paper Sizes (Min./Max.):** Main Tray 4.1" x 5.8"/8.5" x 14"; 2nd Tray 5.8" x 8.3/8.5" x 14"; Multi-Purpose Tray 3" x 5"/8.5" x 47.24" banner
- **Paper Weight:** Main Tray 20 lb. – 32 lb. bond (75 – 120 gsm); 2nd Tray 20 lb. – 47 lb. bond (75 – 176 gsm); manual feed 20 lb. bond – 110 lb. index card stock (75 – 203 gsm); duplex 20 lb. – 28 lb. bond (75 – 105 gsm)

### Environmental

- **Size (WxDxH):** 17.1" x 22.1" x 13.4" (43.5 cm x 56.1 cm x 34.0 cm)
- **Weight:** Approx. 57.3 lb. (26.0 kg)

### Supplies

- **Toner Cartridges and Image Drums:** Separate Black, Cyan, Magenta and Yellow
- **Toner Cartridge Life:** 5,000 pages CMY, 6,000 pages Black at approx. 5% density<sup>3</sup>
- **Image Drum Life:** Approximately 20,000 pages<sup>4</sup>

### Warranty

- **Printer:** 1-Year limited with Overnight Exchange<sup>5</sup>
- **Digital LED Printheads:** 5-Year limited warranty

Ordering Information	
Description	Part Numbers
<b>Printer</b>	
C6100n 120V (Multilingual)	62426601
C6100n 230V (Multilingual)	62426602
C6100dn 120V (Multilingual)	62426603
C6100dn 230V (Multilingual)	62426604
C6100dtn 120V (Multilingual)	62426605
C6100dtn 230V (Multilingual)	62426606
C6100hdn 120V (Multilingual)	62426607
C6100hdn 230V (Multilingual)	62426608

## Ordering Information continued

Description	Part Numbers	
<b>Options</b>		
Duplex (2-Sided Printing) Unit	43347501	
530-sheet 2nd Paper Tray	43347601	
<b>Memory Expansion:</b>		
256 MB DIMM	70051601	
512 MB DIMM	70051701	
40 GB Hard Disk Drive	70043502	
<b>Supplies</b>		
<b>Toner Cartridges:</b>		
Cyan Toner Cartridge 5,000 pg. <sup>3</sup>	43324419	
Magenta Toner Cartridge 5,000 pg. <sup>3</sup>	43324418	
Yellow Toner Cartridge 5,000 pg. <sup>3</sup>	43324417	
Black Toner Cartridge 6,000 pg. <sup>3</sup>	43324420	
<b>Image Drum Kits:</b>		
Cyan Image Drum Kit 20,000 pg. <sup>4</sup>	43381719	
Magenta Image Drum Kit 20,000 pg. <sup>4</sup>	43381718	
Yellow Image Drum Kit 20,000 pg. <sup>4</sup>	43381717	
Black Image Drum Kit 20,000 pg. <sup>4</sup>	43381720	
<b>OKIcare® Overnight Exchange Warranty Extensions<sup>5</sup></b>		
	<b>U.S.</b>	<b>Canada</b>
C6100 Srs. 1-Yr Warranty Ext.	58265801	58265811
C6100 Srs. 2-Yr Warranty Ext.	58265802	58265812
C6100 Srs. Upgrade to On-Site	58265602	58265612
<b>OKIcare® On-Site Warranty Extensions<sup>5</sup></b>		
	<b>U.S.</b>	<b>Canada</b>
C6100 Srs. 1-Yr Warranty Ext.	58263501	58263511
C6100 Srs. 2-Yr Warranty Ext.	58263502	58263512
<b>Print Media</b>	<b>Sheets Per Box</b>	
Bright White Proofing Sheets (32 lb.):		
8.5" x 11"	500	52206101
Premium Color Transparency Film	50	52205701
Premium Card Stock (8.5" x 11"):		
60 lb. Cover	250	52205601
90 lb. Index	250	52205602
110 lb. Index	250	52205603
SynFlex™ Paper (8.5" x 11" – Waterproof and Tear-resistant)	100	52205901
Premium Envelopes (size #10):		
	500	52206302
Banner Paper (8.5" x 35.4")	100	52206002

For more information on Digital Color Printers and supplies from OKI Printing Solutions, including OKIcare® Extended Service Programs<sup>4</sup>:  
**1-800-OKI-DATA (800-654-3282).**



<sup>1</sup> Published performance results based on laboratory testing. Individual results may vary.

<sup>2</sup> Standard on C6100hdn; optional on other models.

<sup>3</sup> Toner cartridges have an estimated life based on 5% coverage of letter-size pages. Printers ship with a complete set of 2,000-page "starter" toner cartridges.

<sup>4</sup> Estimated life, based on 3 pages per job.

<sup>5</sup> Available in the U.S. and Canada only.

Specifications are subject to change without notice.

© 2006 Oki Data Americas, Inc. OKI Reg. T.M., M.D. M.R., OKIcare, OKiLAN Reg. T.M., Oki Electric Industry Co., Ltd. Single Pass Color T.M. and design Reg. T.M., Oki Data Corp. SynFlex, Overnight Exchange logo T.M., Oki Data Americas, Inc. PCL Reg. T.M., Hewlett Packard Co. Windows, Windows NT Reg. T.M., Microsoft Corp. PostScript Reg. T.M., PostScript 3 T.M., Adobe Systems, Inc. Mac Reg. T.M., Apple Computer Inc. USB-IF logo T.M., Universal Serial Bus Implementers Forum, Inc. Energy Star Reg. T.M., U.S. EPA.

Printed in the USA

MS 11505/0406

## OKI DATA AMERICAS, INC.

USA  
 2000 BISHOPS GATE BLVD.  
 MOUNT LAUREL, NJ 08054-4620  
 TEL: 800.OKI.DATA (800.654.3282)  
 FAX: 856.222.5320

CANADA  
 2735 MATHESON BLVD. EAST  
 MISSISSAUGA, ONTARIO L4W 4M8  
 TEL: 905.238.4250  
 FAX: 905.238.4421

LATIN AMERICA AND MEXICO  
 2000 BISHOPS GATE BLVD.  
 MOUNT LAUREL, NJ 08054-4620  
 TEL: 856.231.0002  
 FAX: 856.222.5071

[WWW.OKIPRINTINGSOLUTIONS.COM/US](http://WWW.OKIPRINTINGSOLUTIONS.COM/US)

**OKI®**  
 PRINTING SOLUTIONS